

# TC



TC-650 / TC-1100



TC-2000



TC-2500 / TC-3000

## Main Feature

### • Satisfying TEES qualified UPS

TC UPS went through several practical experiments and confirmed its industrial grade power protection. TC UPS is also compliant to Transportation Electrical Equipment Specifications (TEES) and could widely applied to outdoor equipment.

### • Wide Operating Temperature range -37°C to +74°C and no derating

To meet the harsh operating environment, TC UPS is specially designed to operate in the temperature from (-37°C to +74°C), and no derating at extreme temperature range, fully protect critical device.

### • Programmable Dry Contacts

6 outputs and 1 input programmable dry contact, provided to user for better power management and accident resilience.



### • Various Communications Available

TC provides various ways of communication

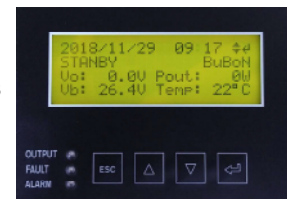
- USB B type
- RS-232
- Ethernet port (optional)

### • Generator Mode Compatibility

Generator mode allows wider variation in input voltage and frequency while AC generator is applied.

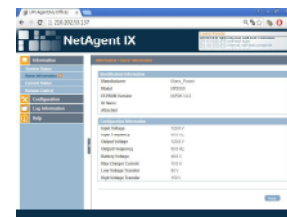
### • Accurate Message Deliver

4-line 20 character display ; High contrast monitor remains the same display sharpness while maintaing under sunshine.



### • Particular Information Monitoring

Specially customized UPS monitoring system is applied to display specific TC information simply with web browser.



### • Flexible Communication Method

With communication slot, UPS status and scheduled action could easily be collected from system monitoring.

### • Enhanced Power Management Ability

Extra input ports are prepared for more reference while UPS power management.

### • Built-in AVR Function

Fluctuating voltage, brownout and other voltage problem can be stabilized through TC in-built AVR for your best interest.

### • Inverter Mode

TC UPS is capable of running continuously in inverter mode and provide current limit protection.



**POWERCOM**

[www.upspowercom.com](http://www.upspowercom.com)

# Wide Temperature Range UPS

## Specification

Model		TC-650	TC-1100	TC-2000	TC-2500	TC-3000
Configuration						
Capacity (VA)		650 VA	1100 VA	2000 VA	2500 VA	3000 VA
Capacity (Watts)		650 W	1100 W	2000 W	2500 W	3000 W
Input						
Voltage		120VAC ±25% , 220 / 230 / 240VAC ±25%			220 / 230 / 240VAC ±25%	
Frequency		120VAC 60Hz , 220 / 230 / 240VAC 50 / 60 Hz				
Output						
Waveform		Pure Sine Wave				
Voltage		120VAC or 220 / 230 / 240VAC			220 / 230 / 240VAC	
Frequency		50 Hz / 60 Hz ±0.5 Hz				
Transfer Time	Normal Mode (Max.)	12 ms				
	Generator Mode (Max.)	25 ms				
AC Input & Output Connectors		Terminal Block , Anderson PP45 Quick connector, IEC socket				
Protection						
Full Protection		Overload, Breaker				
Management & Communication						
Communication Port		RS232 , USB B Type, SNMP card (Option)				
Physical						
Dimensions (WxDxH) (mm)		432 x 254 x 88.6		432 x 254 x 133	432 x 320 x 133	432 x 460 x 133
Weight (kgs)		13		21	21	34
Shipping Dimensions (mm)		540 x 388 x 233		540 x 388 x 277	540 x 454 x 277	676 x 601 x 281
Shipping Weight (kgs)		14		23	24	39
Indicators						
LCD Display		4 Line Multi-function LCD				
LED Display		Output Status, Alarm, Fault LED				
Environmental						
Operating Temperature		-37 - +74°C				
Operating Humidity		0-95 % RH (Non-condensing)				
Audible Noise		Less than 50 dB		Less than 60 dB		
Battery						
String Voltage		24 VDC		48 VDC		
Type		Lead-acid Battery				
Max Charge Current		TC-650 / 1100 10A, TC-2000 / 2500 / 3000 10A, (30A Option)				

\* Specifications are subject to change without further notice.

\* Specifications are for reference, please refer to information based on real product.

\* No derating under full temperature range.

20240420



**POWERCOM**

[www.upspowercom.com](http://www.upspowercom.com)

**HELIOS**  
POWER SOLUTIONS

**heliosps.com**

Australia  
sales-au@heliosps.com  
+61 2 7200 9200

New Zealand  
sales-nz@heliosps.com  
+64 9 835 0700

Specifications subject to change.

Asia  
sales@heliosps.asia  
+65 6871 4140

Middle East  
sales@heliosps.asia  
+971 4 401 8484