

Pro Series

Quick Start Guide



WARNING

Risk of serious personal injury or damage to equipment and property. Always observe the following:

- Installation must be done by qualified technicians.
- Input voltages can range up to 240 volts AC. All upstream AC, load and battery breakers must be shut OFF prior to installation. The system must be completely de-energized.
- Operate the supply from a grounded 3-wire 120-volt AC or 230/240-volt AC source (50 or 60 Hz) with a branch circuit breaker rated 20 amps or less.
- Install chassis ground to the unit before connecting AC input.
- Do not connect either of the unit's main outputs to the "+ BAT" terminal, as this may short-circuit the battery or bypass the internal LVD circuitry.
- Do not connect a battery to the "+ BAT" terminal when more than one power supply is connected in parallel.
- Battery current through the "+ BAT" terminal and internal LVD relay must not exceed the maximum current limit rating of the power supply. Use a suitably rated overcurrent protection device and disconnect in line with the "+ BAT" terminal and external battery positive.
- Use of lithium-ion battery is not recommended.
- Always consult with and observe all battery manufacturer recommendations.



CAUTION

Risk of personal injury or damage to equipment and property. Always observe the following:

- Do not connect power supplies of different output voltage ratings in parallel as this may damage the units or the connected loads.
- DC-AC inverters should not be connected to the outputs without a battery connected to the power supply.



NOTICE

Risk of damage to equipment, environmental hazards, loss of data and other undesirable consequences. Always observe the following:

- Third-party surge protection devices must be utilized to protect AC input power feeds, every exposed DC power conductor, and exposed data cables. These protection devices must be installed at both ends of the exposed conductor, in close proximity to installed equipment.

1

UNPACK AND INSPECT

- Power supply
- One nut on the ground stud (installed)
- One power cord
- Bag containing the following:
 - DC output bus bar cover
 - Instruction manual (USB drive)
 - One 5-pin Form-C alarm/remote connector plug
 - Two 1/4-inch bolt/washer/nut sets for the DC output bus bar connection
 - One 1/4-inch bolt/washer/nut set for the BAT bus bar connection (if SB model)
 - Two 6-32 x 1/4-inch screws for installing the bus bar cover

NOTE: In case of shipping damage, your freight carrier should be notified immediately.

2

PREPARE THE TOOLS AND PARTS NEEDED

- Two 7/16-inch wrenches for the output connection
- Wire stripper and crimper
- Four screws to install the unit into the equipment rack
- #1 Phillips screwdriver for the connections of rack ears and output bus bar cover
- 3/32-inch flathead screwdriver for the connection of the Form-C alarm/remote wires

3

MOUNT THE UNIT INTO A 19-INCH RACK (Support the rear of the unit if necessary)

Ensure that power switch is off before installation.



NOTE: For parallel power supply installation, refer to Section 2.14 of the Instruction Manual.

4

CONNECT THE CHASSIS GROUND

Connect the chassis ground according to the site design, and in accordance with the local electrical code standards. Use a ground bonding wire that is rated to handle the maximum current rating of the unit.

5

CONNECT USER SUPPLIED SURGE PROTECTION DEVICE(S)

Third-party surge protection device(s) must be utilized to protect AC input power feeds and every exposed DC power conductor. These protection devices must be installed at both ends of the exposed conductor, in close proximity to installed equipment. Periodically inspect these surge protection devices for proper function.



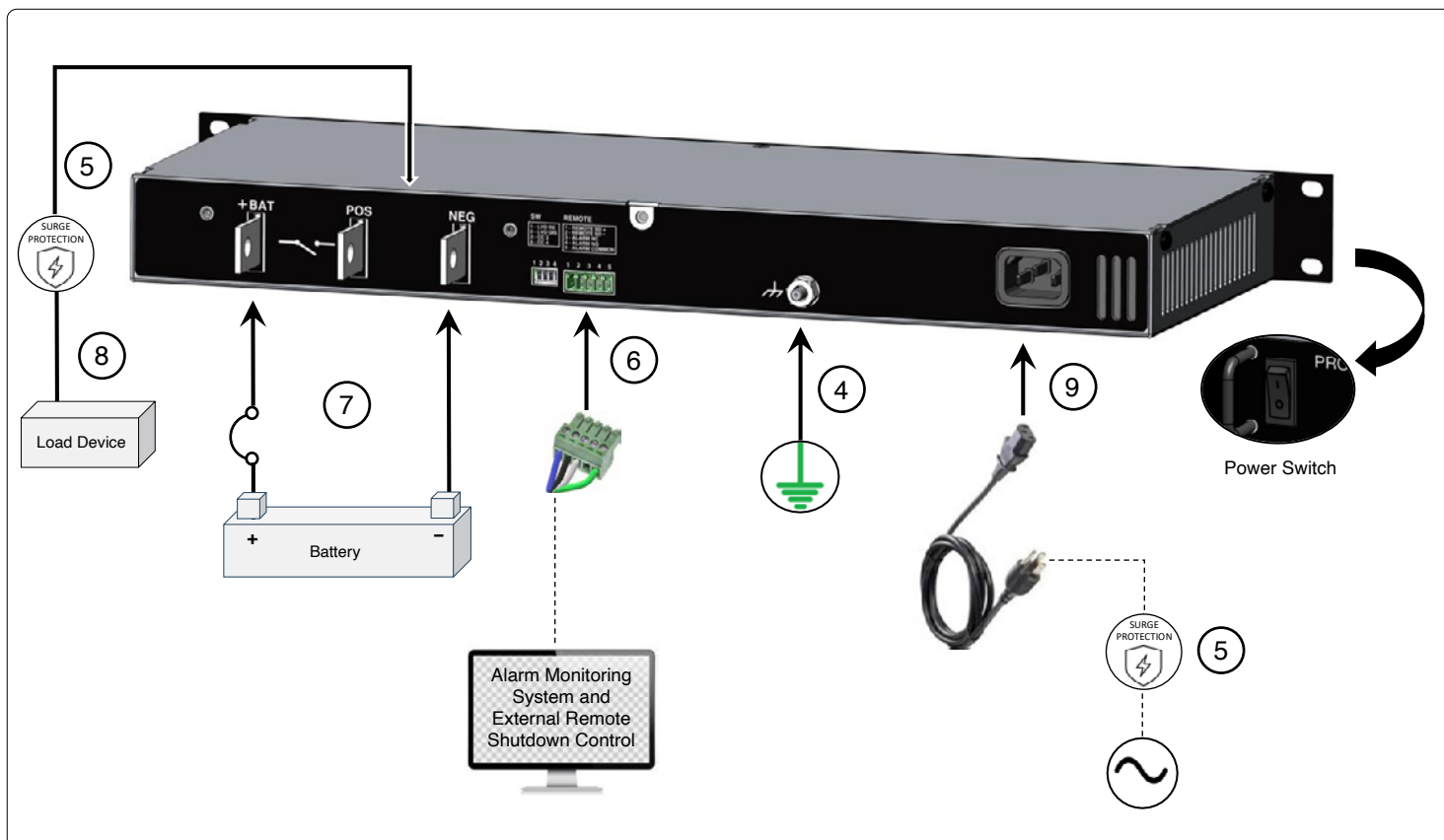
Scan the QR code to download the Instruction Manual.



INNOVATIVE CIRCUIT TECHNOLOGY LTD.
26921 Gloucester Way
Langley, British Columbia, Canada V4W 3Y3
www.ict-power.com

Pro Series

Quick Start Guide



6 CONNECT THE ALARMS, AND EXTERNAL REMOTE SHUTDOWN CONTROL IF NEEDED

- Install the 5-pin connector to the REMOTE terminal.
- Connect an external Remote Shutdown control to pins 1 and 2 using 14–30 AWG wires.
- Connect an external monitoring device to either pins 3 (NC) or 4 (NO) and pin 5 (common) using 14–30 AWG wires.

7 CONNECT THE BATTERY (IF APPLICABLE)

Make connections to the battery using wire and connectors appropriately rated for the maximum unit current. Connect the battery positive lead to the "+ BAT" terminal, and the battery negative lead to the "NEG" terminal. Install an appropriate in-line DC overcurrent protection device on the battery positive lead. Leave the battery breaker open until the software has been configured.

NOTE: Use of lithium-ion batteries is not recommended. The Pro Series is designed and optimized for lead-acid batteries.

8 CONNECT THE LOADS

- Ensure that the front-panel power switch is in OFF position.
- Make connections to the load using wire and connectors appropriately rated for the maximum load current. Connect the load positive lead to the "POS" terminal, and the load negative lead to the "NEG" terminal.

9 CONNECT AND ENERGIZE THE AC POWER SOURCE

- Ensure that the front-panel power switch is in OFF position.
- Plug the AC connector into the AC input on the unit rear panel.
- Connect the source end of the cord to a standard wall socket or de-energized AC source equipped with a branch circuit breaker of 20 amps or less.
- Energize the AC feed.

10 VERIFY THE SYSTEM WIRING

- Check that all connections to the power supply are correct and properly tightened.
- Install the protective bus bar cover using the screws provided.

11 ENERGIZE THE LOADS AND THE BATTERY CONNECTIONS

- Turn ON the front-panel power switch to energize the loads.
- Close the backup battery breaker (if an external battery is used) to connect the backup battery string(s) to the system.